



**JAYLINE**  
**WOODSTOVES**

Warms  
where  
ordinary  
fires  
just  
can't  
reach

CONDITIONAL  
**10** *year*  
WARRANTY



## ◀ THE GEM

Ideal for heating the smaller home, the Jayline Gem incorporates many of the features of the larger Jayline fires to provide one of today's best value heating packages. Its compact good looks are designed to look good in any home and, with Jayline's unique Convection Tube airflow system and a fully ceramic-lined firebox, you'll get more heating power than you would normally expect from a compact space heater.

## THE GEM INSERT ▶

The Gem Insert provides an ideal opportunity to replace your open fireplace and experience the efficiency of Jayline's superior woodburning technology. The Jayline Gem Insert has the same internal features as the Gem freestander. It fits neatly into any existing fireplace or, with the Jayline Heatcell, directly into any wall without the need for added insulation. If you like a real fire, The Jayline Gem Insert is the cost-efficient way to get the best of both worlds.



## ◀ THE SAFFIRE

The perfect free standing fire for both modern and traditional homes. The Saffire's unique Surround Vision glass door increases both the view of the fire and heat output by up to 30%. With a hideaway ash spill tray, ceramic lined firebox and a host of other practical design features, the Jayline Saffire is a stylish choice for the small to medium size home.



**WARM TO THESE  
SPECIAL FEATURES:**

◀ Unique Convection Tube System spreads v  
Air Entry System provides cleaner, more effici  
controls for easy, efficient operation ▶ Speci

### THE SPITFIRE ►

Advanced good looks and performance with a larger firebox for greater heating power generating up to 21kW of heat output. Clean lines and superior design features such as hideaway door handle and Surround Vision glass are the perfect combination for today's large space heating requirements.



### ◄ THE SPITFIRE INSERT

The latest in high performance, high economy, inbuilt woodstoves, the Jayline Spitfire Insert has the same internal features as the Spitfire freestanding fire, including the Jayline Convection Tube System, Surround Vision glass and single action heat control. The Spitfire can also be installed with the Jayline Heatcell for the ultimate in space saving efficiency.



### THE STARFIRE ►

As the name suggests, this is the star of the Jayline range. The perfect heater for larger spaces and more extreme winter chills. A huge 24kW output ensures warmth in homes in excess of 200 m<sup>2</sup> (2000+ sq ft). The Starfire's large ceramic lined firebox will take logs up to 450 mm long to keep you warm through the longest winter. It's big and beautiful. And, like all Jayline Woodstoves, the Starfire is designed to deliver maximum heat with clean burning efficiency.



ures and give longer life ◄ Multi-point  
nd Starfire models ◄ Single action heat  
oice of stylish enamel colours

  
**JAYLINE  
WOODSTOVES**

## AN AIRFLOW SYSTEM LIKE NO OTHER FIRE

Today, "double burning" fires are common place. But the Jayline system is radically different. In addition to a secondary burn chamber ①, Jayline Woodstoves incorporate a unique Multi-point Air Entry System ② to feed in exactly the right amount of air at the right temperature to ensure peak efficiency and economy at all burn levels.

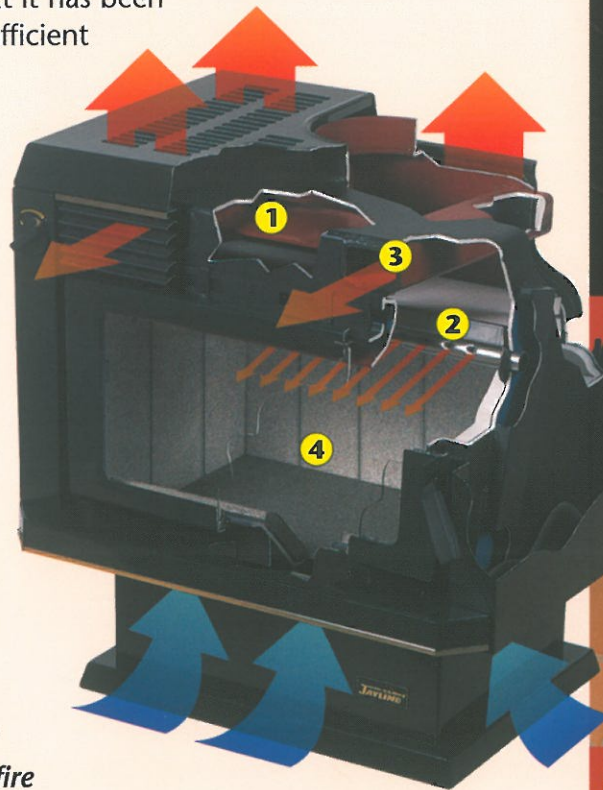
Another unique feature is the Jayline Convection Tube System ③, a series of tubes in the upper chamber of the firebox through which warm air is forced, reheated, and then thrust out through the front of the fire at high velocities. This action sets up warming convection currents heating your room faster, pushing heat into areas where ordinary fires can't reach.

## SUPER ECONOMY... LIKE NO OTHER FIRE

The special burning characteristics and advanced airflow systems of a Jayline Woodstove enable maximum energy to be extracted from the fuel and more heat to be transferred to your room. Even at lower settings and during long overnight burning, the Jayline system is designed to operate at peak efficiency. So much so that it has been rated amongst the most efficient heaters in the world.

## BURNS CLEAN... LIKE NO OTHER FIRE

Jayline Woodstoves are among the first in the world to incorporate full ceramic linings ④ in their firebox designs. Not only will they tolerate higher temperatures, a ceramic lined firebox will mean less maintenance, a longer life, and a cleaner burning fire.



## THE JAYLINE HEATCELL

*Designed to go where no fire has gone before.*

Now you can safely fit your Jayline insert stove directly into any wall without the need for an existing masonry fireplace or added insulation. Measuring just 660 mm high, 760 mm wide and 585 mm deep, the Jayline Heatcell is a highly insulated unit specifically designed for Jayline insert heaters. Its integral high-performance flue system stays so cool that it can touch framing timbers without any danger or reduction in heating performance. Ask your stockist for more information.

Surround Vision moulded glass door

Hideaway opening handle

Single action heat control

Concealed ash spill tray

Removable grill for cooktop



## ◀ THE CLASSIC

Classic good looks coupled with classic performance makes this a solid heating choice for the medium size home. With Jayline's advanced heating technology, including steel firebox with ceramic lining and the unique Convection Tube System to spread heat fast into every corner of your room.



## THE CLASSIC INSERT ▶

The superior heating performance of the Classic in a sleek inbuilt unit that installs easily into existing fireplaces or, with the Jayline Heatcell, directly into any wall space without the need for added insulation. Generous firebox capacity for a fire that provides all the warmth you need for the coldest winter nights.



Warmth faster and more efficiently ◀ Ceramic lined firebox to withstand higher temperatures  
 ▶ Easy to operate door handles ▶ Concealed door handle on Saffire, Spitfire and  
 ▶ Concealed ash spill tray ▶ Large glass areas ▶ Cleaner burning, low emissions ▶ C

CONDITIONAL  
**10** year  
WARRANTY

## THE JAYLINE GUARANTEE

When you buy a Jayline Woodstove, you're getting a quality appliance that's designed to give many years of reliable service. Rigorous testing is performed on all Jayline Woodstoves in independent laboratories and domestic situations. Full compliance with international safety, performance and emission regulations is of paramount importance. For this reason you are offered a comprehensive 10 Year Conditional Guarantee.

## GENERAL INFORMATION

Recommended fuel: wood or wood and coal mix 50/50 (check with your dealer regarding local by-laws). Heating output and burn times will vary depending on fuel size, type and moisture content. The Jayline Woodstove range has been tested to comply with NZS7421, NZS7403 and AS2918, AS4013. All Jayline Woodstoves are supplied with installation and operation instructions.

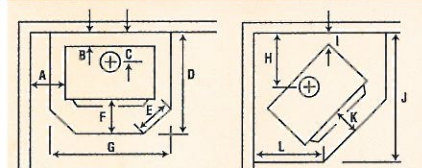
*Jayline Heating Ltd reserves the right to change specifications or design of its product without prior notice.*



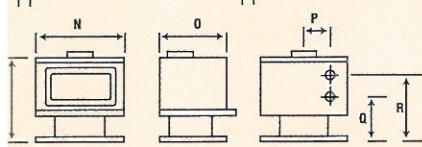
## THE MAGIC MULTI FUEL

For the ultimate in versatility, you won't find a better way to heat your home than the Jayline Magic Multi Fuel. This elegant looking heater has the same external specifications as the Jayline Classic, but with its robust, ceramic-lined firebox the Magic Multi Fuel can burn wood, coal, or a combination of both. Add to this Jayline's unique Convection Tube System and you have a highly efficient, clean burning fire that lets you choose the fuel you prefer.

## FREESTANDING SPECIFICATIONS (MM)

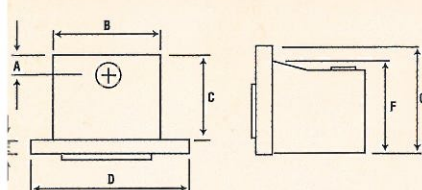


	NZ CLEARANCES (FLUE SCREEN 1200)											AUST CLEARANCES (FLUE SCREEN 600)											MEASUREMENTS							
	A	B	C	D	E	F	G	H	I	J	K	L	A	B	C	D	E	F	G	H	I	J	K	L	M	N	O	P	Q	R
GEM	161	30	171	674	0	200	800	315	28	865	200	475													625	535	444	146	260	363
CLASSIC	204	111	252	741	166	200	800	348	18	935	200	458	200	120	260	850	440	300	1050	395	75	970	300	655	680	645	430	200	325	425
SAFFIRE	260	60	205	700	280	200	850	290	5	860	200	410	240	55	200	800	280	300	860	290	5	860	300	550	665	535	430	150	290	390
SPITFIRE	340	120	260	750	410	200	850	325	10	900	200	440	320	120	260	850	400	300	850	325	10	950	300	550	675	615	440	200	320	420
STARFIRE	395	122	328	1024	166	200	895	434	100	1178	200	708													743	620	702	200	392	492
MAGIC MULTI FUEL	275	71	191	1021	431	520	1200	367	41	1184	520	701													680	645	430	200	325	425



	ESTIMATED PEAK OUTPUT (KW)	NORMAL OUTPUT (KW)	MAX LOG LENGTH	WATER HEATING OPTION	ESTIMATED BURN TIME ON LOW (HRS)	INSULATION HEARTH	ASH HEARTH
GEM	13	10	325	✓	8-10		✓
CLASSIC	17	14	425	✓	8-10	✓	✓
SAFFIRE	15	12	350	✓	8-10		✓
SPITFIRE	21	18	425	✓	8-10		✓
STARFIRE	24	21	450	✓	10-12		✓
MAGIC MULTI FUEL	22	19	425	✓	10-12	✓	

## INSERT SPECIFICATIONS (MM)



	MEASUREMENTS						
	A	B	C	D	E	G	
GEM	110	480	460	850	65	590	670
CLASSIC	110	585	460	850	65	590	670
SPITFIRE	110	585	430	940	85	590	705

For Insert clearances refer to the installation specification leaflet for your model

	ESTIMATED PEAK OUTPUT* (KW)	NORMAL OUTPUT* (KW)	MAX LOG LENGTH	WATER HEATING OPTION	ESTIMATED BURN TIME ON LOW (HRS)	
GEM	13	10	325	✓	8-10	* Firebox Output only - Actual output may vary depending on installation
CLASSIC	17	14	425	✓	8-10	
SPITFIRE	21	18	425	✓	8-10	

Your approved Jayline Stockist is:

**JAYLINE WOODSTOVES**

Warms like no other fire.

Jayline Heating Ltd, PO Box 20070, Glen Eden, Auckland, New Zealand.  
A division of the Reliance Group. Web <http://www.reliancegroup.co.nz>

